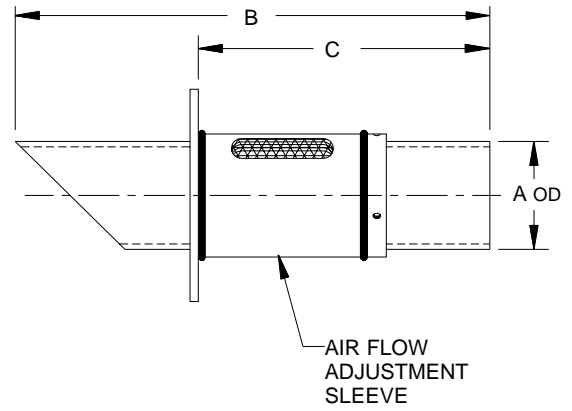
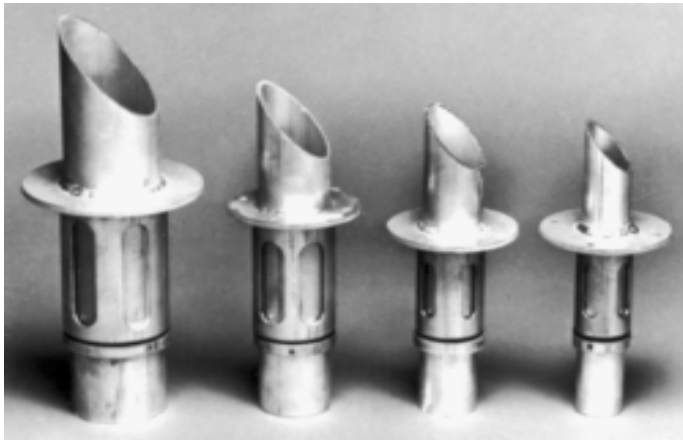
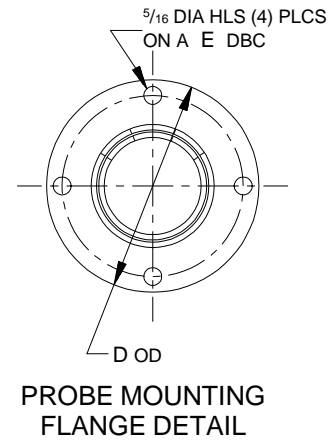


Horizontal Probes

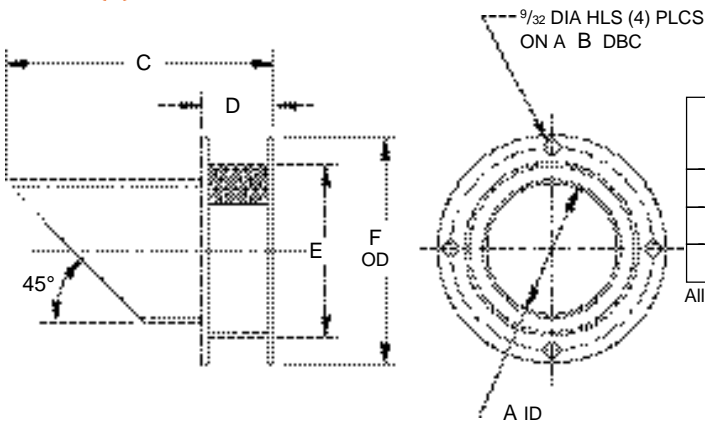


Size Tubing	Part No.		A	B	C	D	E
	Aluminum	316 S. S.					
1 1/2	5314-40	—	1 1/2	11 3/8	7	5 1/2	4 1/2
2	5314-13	5314-86	2	12 1/2	7 7/8	5 1/2	4 1/2
2 1/2	5314-68	—	2 1/2	13 1/4	7 7/8	5 1/2	4 1/2
3	5314-47	5314-88	3	14	8 3/4	5 1/2	4 1/2
4	5314-57	—	4	17	9 3/4	7 1/2	6 1/2



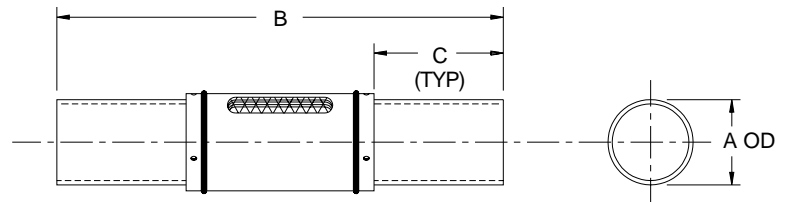
Size Sch. 10 Pipe	Part No.		A	B	C	D	E
	Aluminum	316 S. S.					
1 1/2	5314-71	—	1.9	11 7/8	7 1/2	5 1/2	4 1/2
2	5314-22	5314-91	2.375	13	8 3/8	5 1/2	4 1/2
2 1/2	5314-67	—	2.875	13 3/4	8 3/8	5 1/2	4 1/2
3	5314-49	5314-93	3.5	14 1/2	9 1/4	5 1/2	4 1/2
4	5314-66	—	4.5	17	9 3/4	7 1/2	6 1/2

Air Bypass for Horizontal Probes



Line Size	Part No.		A	B	C	D	E	F
	Aluminum	316 S. S.						
1 1/2 & 2	5314-59	5314-105	2 7/8	4 1/2	4 7/8	1 1/8	4 3/16	5
3	5314-61	5314-106	3 3/8	4 1/2	5 1/2	1 1/8	4 3/16	5
4	5314-65	—	4 13/16	6 1/2	7 1/2	1 3/4	6	5 1/2

All dimensions are in inches



Air Flow Controls

Size Tubing	Part No.		A	B	C
	Aluminum	316 S. S.			
1 1/2	5314-51	—	1 1/2	10 1/2	3 3/16
2	5314-20	5314-109	2	11 3/8	3 3/16
2 1/2	5314-70	—	2 1/2	12	3 1/2
3	5314-53	5314-111	3	13	3 9/16

All dimensions are in inches

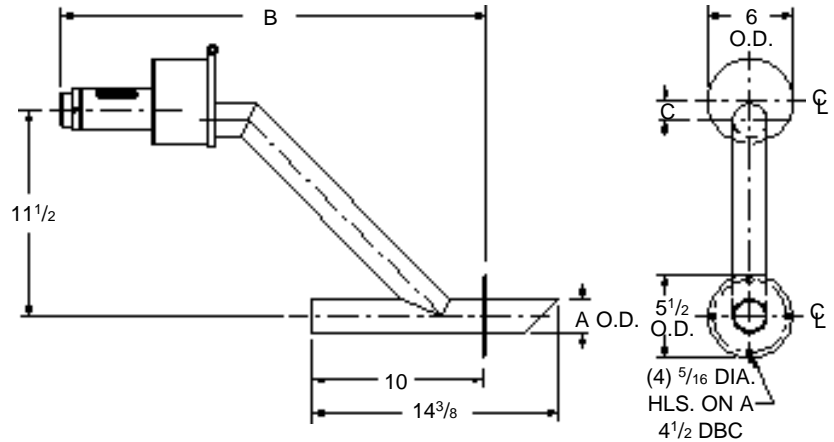
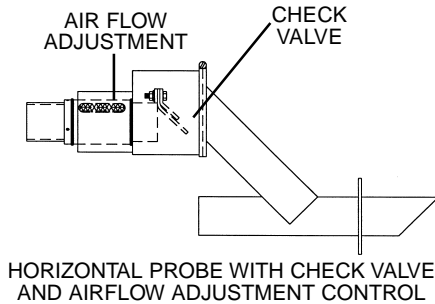
Horizontal Probes with Check Valves



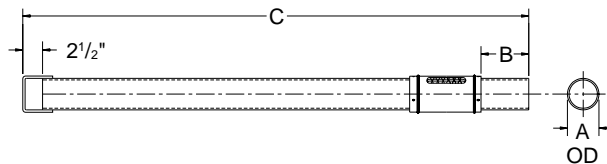
- Prevents blow-back of fine powders from the probe's airflow adjustment sleeve into the process area.
- Designed for use in a single- or multiple-position probe box.
- May be required for vacuum applications where dusty, fluidized materials are conveyed.
- Useful when material is vacuum conveyed a short distance to a pulse-cleaned receiver.

Size Tubing	Part No.		A	B	C
	Aluminum	316 S.S.*			
2	5314-114	5314-113	2	24 ³ / ₄	1 ¹ / ₂
3	5314-116	5314-115	3	25 ³ / ₄	1

*Material contact areas only.
All dimensions are in inches



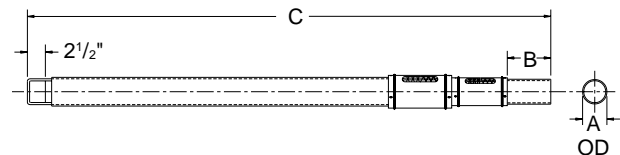
PELLET PROBE



Size Tubing	Part No.		A	B	C
	Aluminum	316 S. S.			
1 ¹ / ₂	5314-72	—	1 ¹ / ₂	4 ³ / ₈	58 ¹ / ₂
2	5314-73	5314-101	2	4 ¹ / ₂	58 ¹ / ₂
2 ¹ / ₂	5314-74	—	2 ¹ / ₂	9	62 ¹ / ₂
3	5314-75	5314-103	3	4 ⁵ / ₈	58 ¹ / ₂
4	5314-76	—	4	4 ⁵ / ₈	58 ¹ / ₂

Vertical Probes

POWDER PROBE



Size Tubing	Part No.		A	B	C
	Aluminum	316 S. S.			
1 ¹ / ₂	5314-77	—	1 ¹ / ₂	4 ³ / ₈	58 ¹ / ₂
2	5314-78	5314-96	2	4 ¹ / ₂	58 ¹ / ₂
2 ¹ / ₂	5314-79	—	2 ¹ / ₂	9	62 ¹ / ₂
3	5314-80	5314-98	3	4 ⁵ / ₈	58 ¹ / ₂
4	5314-81	—	4	4 ⁵ / ₈	58 ¹ / ₂

PELLET-TO-POWDER PROBE CONVERSION KITS

Part No. Aluminum	Description
5503-1	1 ¹ / ₂ " Powder Probe Conversion Kit
5503-2	2" Powder Probe Conversion Kit
5503-3	2 ¹ / ₂ " & 3" Powder Probe Conversion Kit
5503-4	4" Powder Probe Conversion Kit